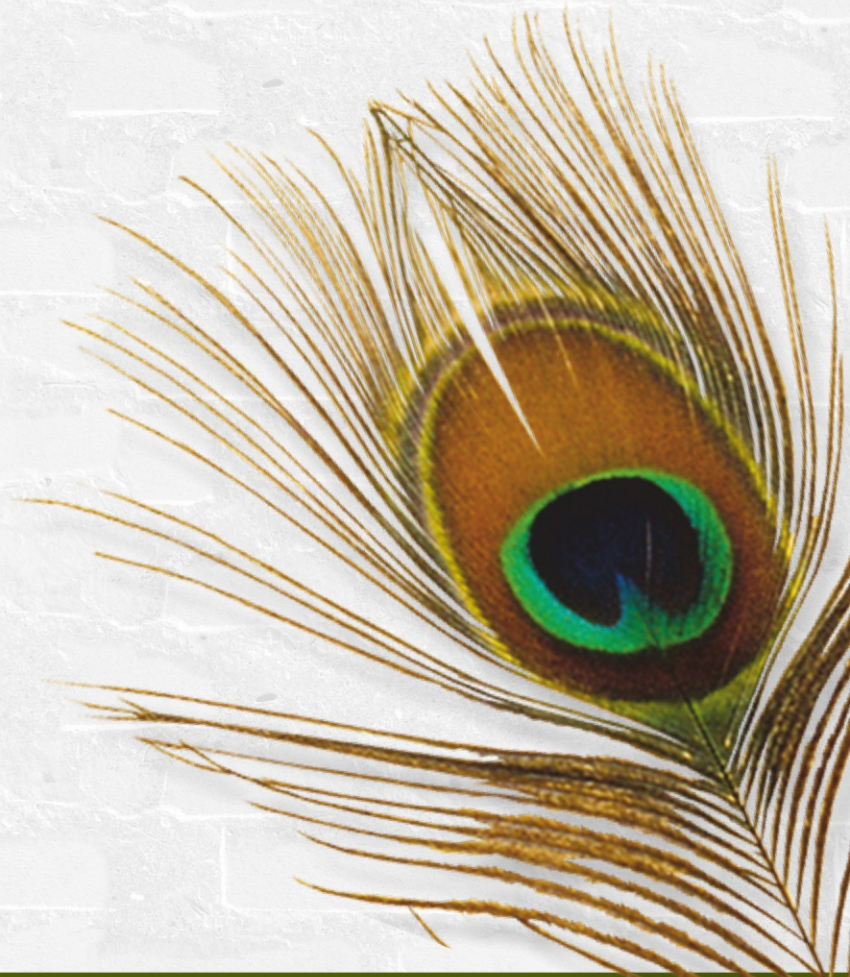


Be a part
of the biggest
Pride
families in town...



Shri Krishna
pride

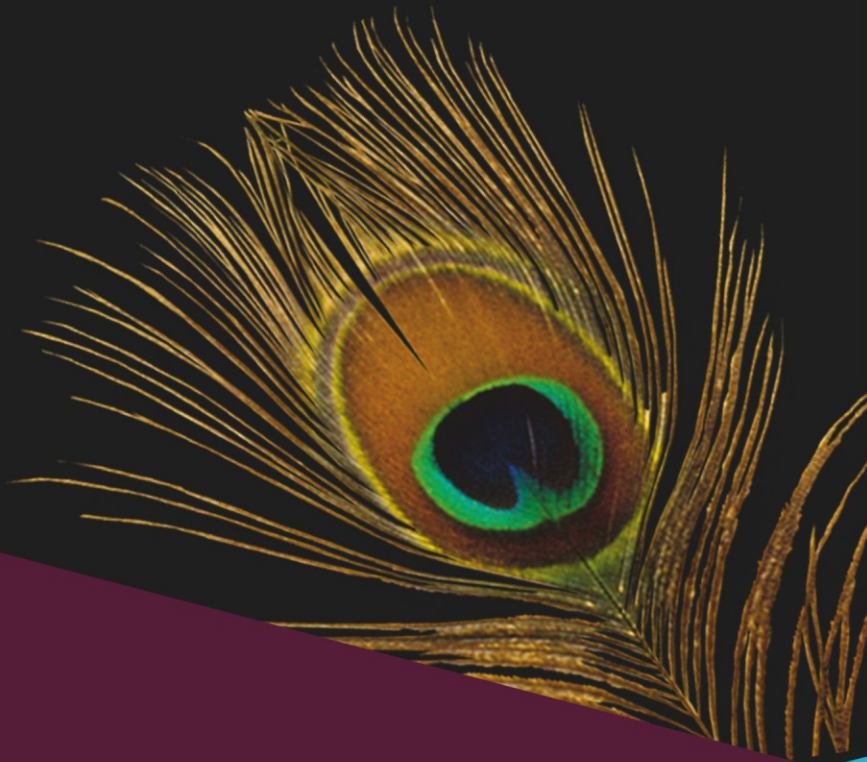
a project by shethji shah & associates



A House is made of
Bricks & Beams,



A Home is made of
Hope & Dreams.



Fulfill your
Dreams at...

Shri krushna
Pride



2 BHK
Luxurious
Terrace Apartments

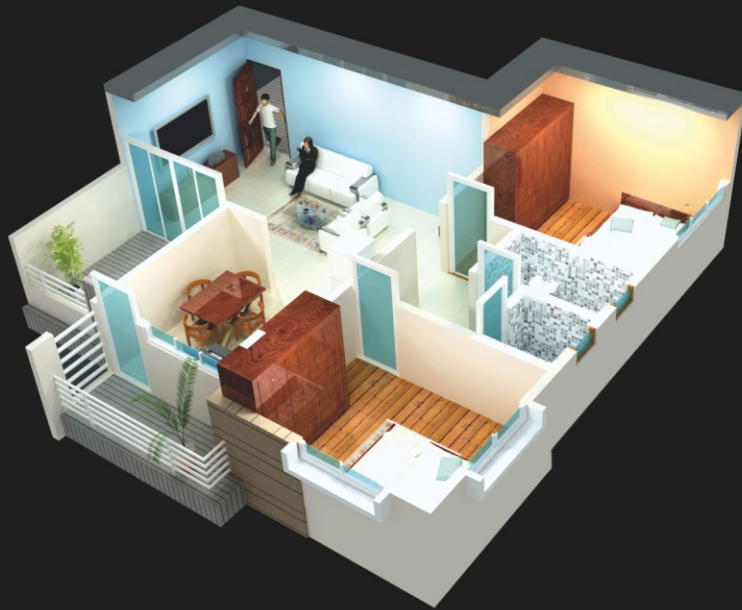
Wing - C



Specifications



Structure	Earthquake resistant R.C.C. Frame structure.
Walls	External - 6"tk Brick wall. Internal - 4"tk Brick wall.
Plaster	Internal - Cement plaster with Neeru / Gypsum plaster. External - Sand faced.
Flooring	Flooring: Vitrified tiles. Terrace: Anti-skid flooring.
Toilet	Glazed/Ceramic tiles dado up to 7' height & Anti-skid flooring. Concealed plumbing system with C.P. fittings of Standard make.
Kitchen	Granite top kitchen platform with SS sink. Glazed tiles up to lintel level for kitchen dado. Arrangements for Washing place / Machine in kitchen balcony.
Doors	Wooden door frames for main door & Marble frames for Internal doors. Masonite paneled Main door with all fittings. Waterproof Flush doors for Balcony, Terrace, Toilets & Bedrooms.
Window	Powder coated aluminum sliding windows with Bajri glass. MS grill to all windows for safety.
Electrical	Open casing-caping wiring with MCB. TV & Telephone points in living room. 1 Tube light & 1 Fan point in all rooms. 15 Amp point in Kitchen & Bathrooms.
Painting	External - Waterproof semi-acrylic paints. Internal - Oil bond distemper. Oil painted Grills & Railings.



Cut - Section





Here We Have Something for
Everyone in the Family to Enjoy...



Amenities

Attractive
Entrance Lobby



Lifts with
Power Backup



Landscape Garden
& Adjacent to
Play Ground



CCTV Security

Totally Paved Area
with Covered Parking



Decorative
Compound Wall



Fire Fighting
Safety System



Balaji
Mangal
Karyalaya

Gramin
Police
Station,
Miraj

Miraj
Guest
House

Miraj
Civil
Hospital

Shri Krishna
Pride

Dwarka Apts.

Bapuji Salunke College
(ACS College)

To Mission Hospital

To Miraj City

To Pandharpur



Location Map



Site Address: | Near Miraj Govt. Guest House, Opp. Gramin
Police Station, Miraj - Pandharpur Road, Miraj

office address:

■ G-3, Radhe Kunj Apartment,
Near Adarsh Mangal Karyalay,
Bramhanpuri, Miraj
Ph: 0233 - 2222828

rcc consultant:

■ S. V. Gharpure
architect
■ Ambarnath Shinde

for booking

■ Mukesh Shethji:
7588155551
■ Dhawal Shah:
9822338827

■ www.kkshahconstruction.com



Member of



This brochure is purely conceptual & not a legal offering. Nor will be part of agreement.
Promoters reserves right to amend the layout, elevation, designs, specifications, amenities etc. without notice..

